



Luci® Inflatable Solar Light User Manual

- 1 **Original**
- 2 **Outdoor 2.0**
- 3 **Lux**
- 4 **Color**
- 5 **EMRG**
- 6 **Troubleshooting**

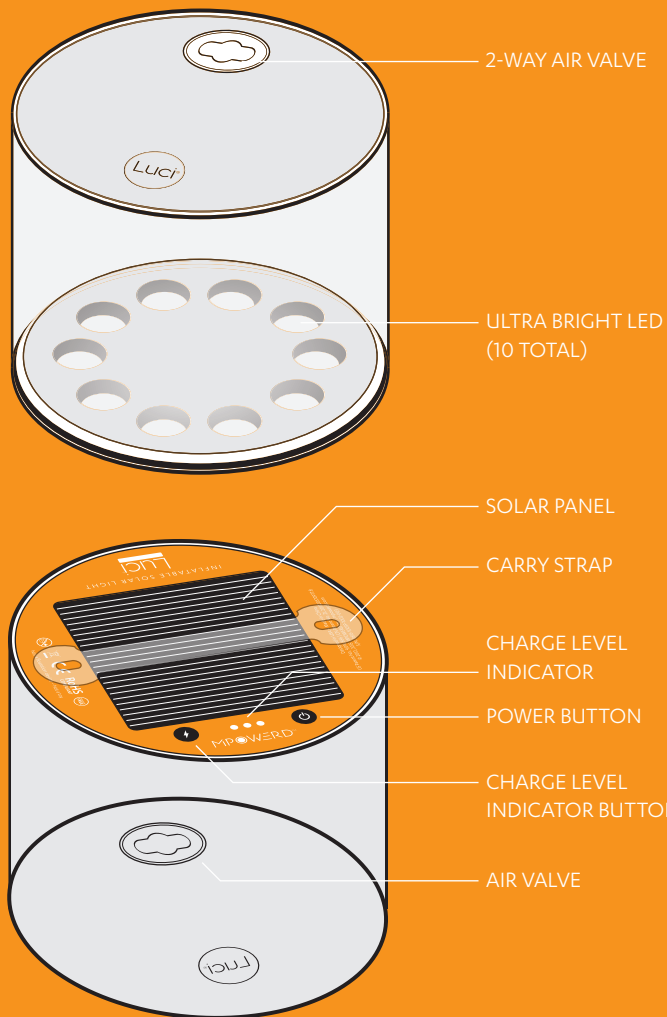
Luci® Original: User Manual

TIP:



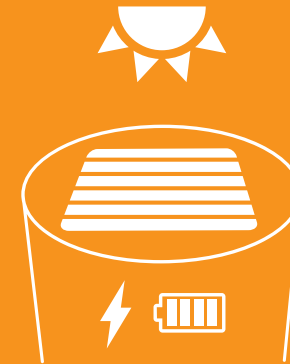
FOR MAXIMUM DURATION
FULLY CHARGE BEFORE USE

10.8 cm height | 12.7 cm diameter | 2.5 cm collapsed
Weight: 4.4 oz (125g)
Waterproof IP67 rating
50 lumens
Rechargeable Lithium Ion battery
Phthalate free PVC



To charge:

1. Place unit with solar panel side in **DIRECT** sunlight.
2. Charge unit for 8 hours. Charging may take a little longer depending on the UV index or overcast skies.
3. Press Charge Level Indicator button (⚡) to check battery level. Unit is fully charged when all 3 lights appear.



To inflate:

1. Pinch the valve to open airway.
2. With the valve pinched pull unit apart to pre-inflate before blowing.
3. Blow into the valve until fully inflated.
4. Firmly close valve tab and push valve into the unit.



To use:

1. Press Power Button (⏻) to turn unit on.

- Press 1X = Bright mode
- Press 2X = Super Bright
- Press 3X = 1 sec flashing
- Press 4X = Off

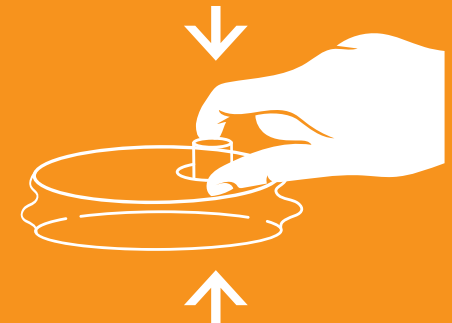


TIP:
Luci works inflated or deflated.

To deflate:

1. Open tab, squeeze valve and push to release the air from the unit.
2. Close tab on valve.

TIP:
Gently twist the light as you deflate for a flatter, more compact shape.



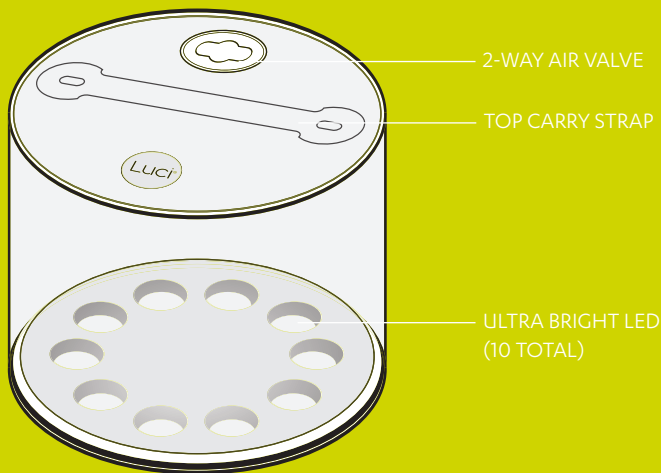
Luci® Outdoor 2.0: User Manual

TIP:



FOR MAXIMUM DURATION
FULLY CHARGE BEFORE USE

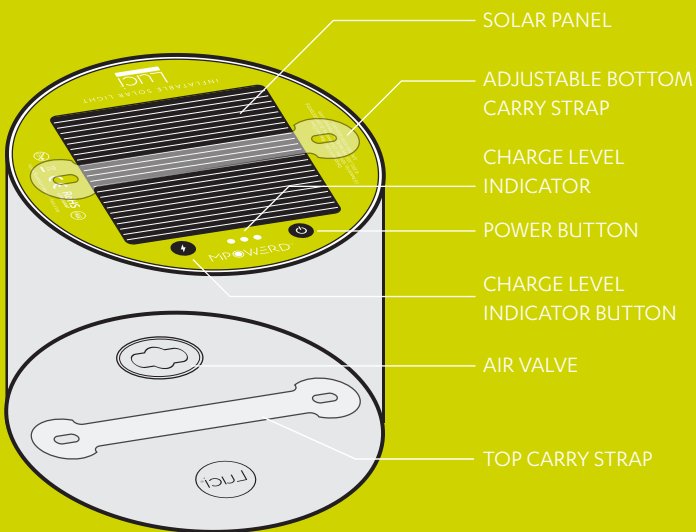
10.8 cm height | 12.7 cm diameter | 2.5 cm collapsed
Weight: 4.4 oz (125g)
Waterproof IP67 rating
65 lumens
Rechargeable Lithium Ion battery
Phthalate free PVC



2-WAY AIR VALVE

TOP CARRY STRAP

ULTRA BRIGHT LED
(10 TOTAL)



SOLAR PANEL

ADJUSTABLE BOTTOM
CARRY STRAP

CHARGE LEVEL
INDICATOR

POWER BUTTON

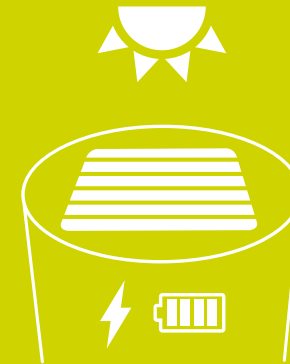
CHARGE LEVEL
INDICATOR BUTTON

AIR VALVE

TOP CARRY STRAP

To charge:

1. Place unit with solar panel side in **DIRECT** sunlight.
2. Charge unit for 8 hours. Charging may take a little longer depending on the UV index or overcast skies.
3. Press Charge Level Indicator button (⚡) to check battery level. Unit is fully charged when all 3 lights appear.



To use:

1. Press Power Button (⏻) to turn unit on.

- Press 1X = Low mode
- Press 2X = Bright
- Press 3X = Super Bright
- Press 4X = 1 sec flashing
- Press 5X = Off

TIP:
Luci works inflated or deflated.



To inflate:

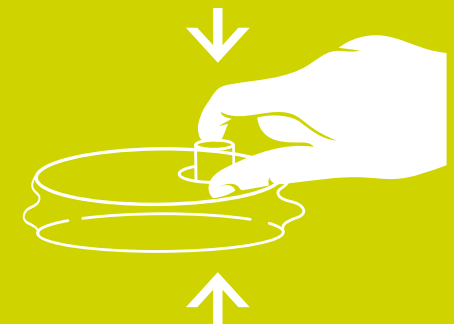
1. Pinch the valve to open airway.
2. With the valve pinched pull unit apart to pre-inflate before blowing.
3. Blow into the valve until fully inflated.
4. Firmly close valve tab and push valve into the unit.



To deflate:

1. Open tab, squeeze valve and push to release the air from the unit.
2. Close tab on valve.

TIP:
Gently twist the light as you deflate for a flatter, more compact shape.



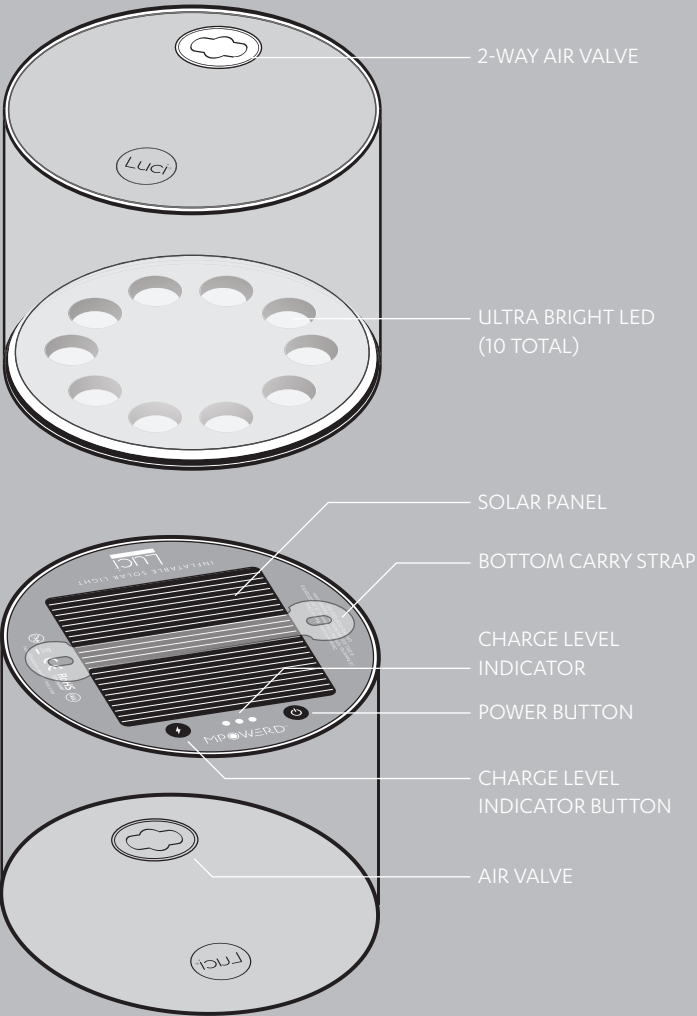
Luci® Lux: User Manual

TIP:



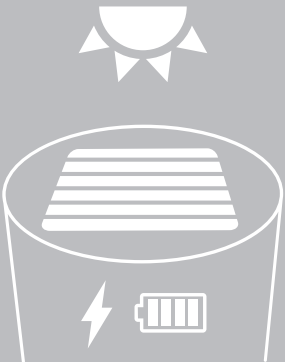
FOR MAXIMUM DURATION
FULLY CHARGE BEFORE USE

10.8 cm height | 12.7 cm diameter | 2.5 cm collapsed
Weight: 4.4 oz (125g)
Waterproof IP67 rating
50 lumens
Rechargeable Lithium Ion battery
Phthalate free PVC



To charge:

1. Place unit with solar panel side in **DIRECT** sunlight.
2. Charge unit for 8 hours. Charging may take a little longer depending on the UV index or overcast skies.
3. Press Charge Level Indicator button (⚡) to check battery level. Unit is fully charged when all 3 lights appear.



To inflate:

1. Pinch the valve to open airway.
2. With the valve pinched pull unit apart to pre-inflate before blowing.
3. Blow into the valve until fully inflated.
4. Firmly close valve tab and push valve into the unit.



To use:

1. Press Power Button (⏻) to turn unit on.
- Press 1X = Bright mode
 - Press 2X = Super Bright
 - Press 3X = 1 sec flashing
 - Press 4X = Off

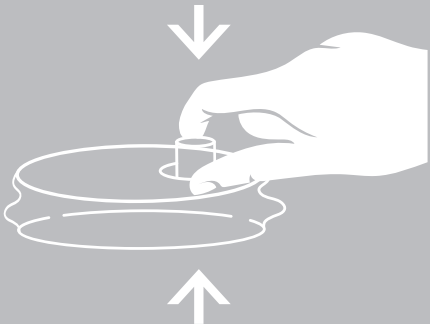


TIP:
Luci works inflated or deflated.

To deflate:

1. Open tab, squeeze valve and push to release the air from the unit.
2. Close tab on valve.

TIP:
Gently twist the light as you deflate for a flatter, more compact shape.



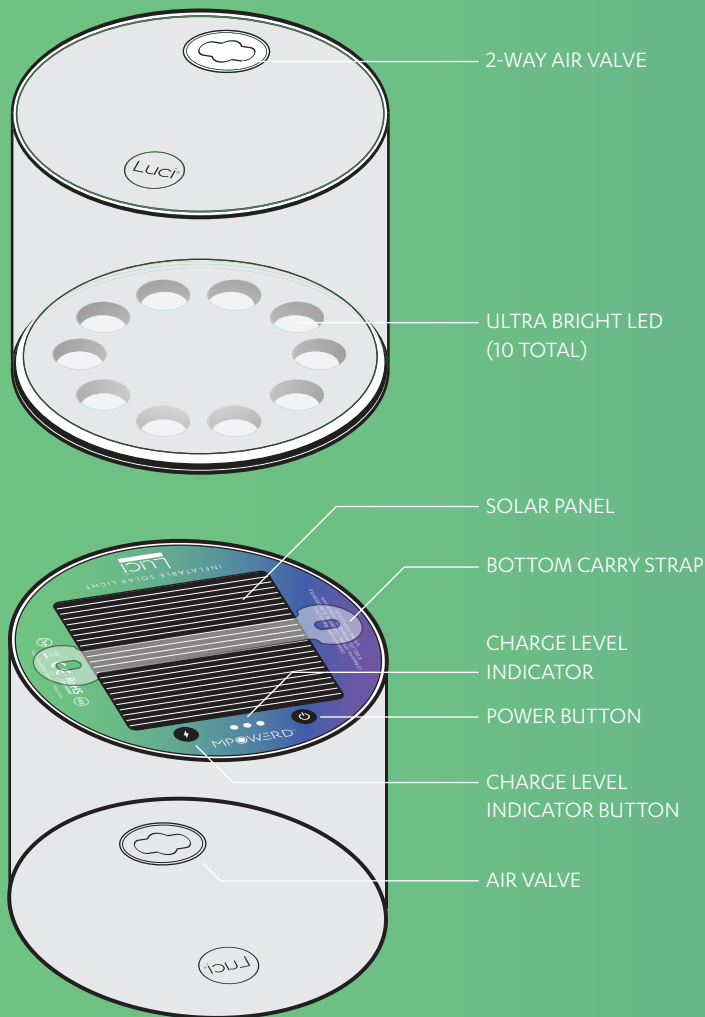
Luci® Color: User Manual

TIP:



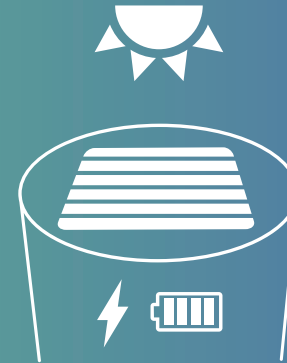
FOR MAXIMUM DURATION
FULLY CHARGE BEFORE USE

10.8 cm height | 12.7 cm diameter | 2.5 cm collapsed
Weight: 4.4 oz (125g)
Waterproof IP67 rating
50 lumens
Rechargeable Lithium Ion battery
Phthalate free PVC



To charge:

1. Place unit with solar panel side in **DIRECT** sunlight.
2. Charge unit for 8 hours. Charging may take a little longer depending on the UV index or overcast skies.
3. Press Charge Level Indicator button (⚡) to check battery level. Unit is fully charged when all 3 lights appear.



To inflate:

1. Pinch the valve to open airway.
2. With the valve pinched pull unit apart to pre-inflate before blowing.
3. Blow into the valve until fully inflated.
4. Firmly close valve tab and push valve into the unit.



To use:

1. Press Power Button (⏻) to turn unit on and choose color.

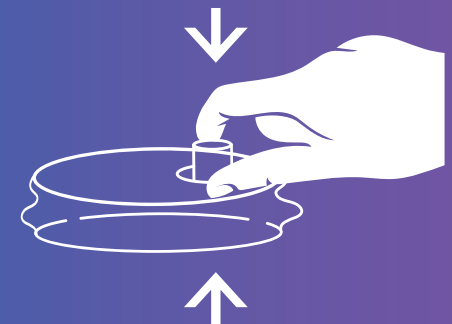
- Press 1X = Red
- Press 2X = Green
- Press 3X = Blue
- Press 4X = Purple
- Press 5X = Yellow
- Press 6X = Cyan
- Press 7X = Orange
- Press 8X = White
- Press 9X = Color Cycle
- Press 10X = Off



To deflate:

1. Open tab, squeeze valve and push to release the air from the unit.
2. Close tab on valve.

TIP:
Gently twist the light as you deflate for a flatter, more compact shape.



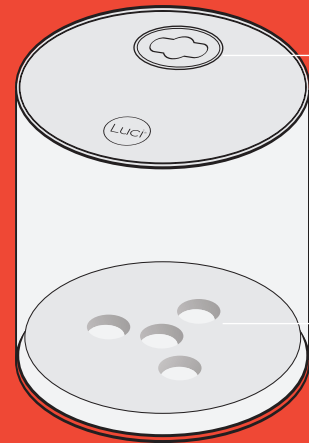
Luci® EMRG: User Manual

TIP:



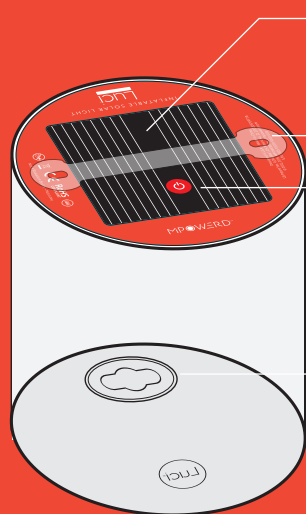
FOR MAXIMUM DURATION
FULLY CHARGE BEFORE USE

10.2 cm height | 10.2 cm diameter | 3.2 cm collapsed
Weight: 2.4 oz (69g)
Waterproof IP67 rating
25 lumens
Rechargeable Lithium Ion battery
Phthalate free PVC



2-WAY AIR VALVE

ULTRA BRIGHT LED
(4 TOTAL)



SOLAR PANEL

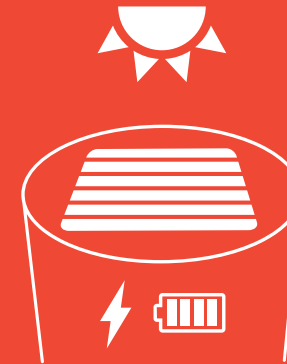
BOTTOM CARRY STRAP

POWER BUTTON

AIR VALVE

To charge:

1. Place unit with solar panel side in **DIRECT** sunlight.
2. Charge unit for 7 hours. Charging may take a little longer depending on the UV index or overcast skies.



To inflate:

1. Pinch the valve to open airway.
2. With the valve pinched pull unit apart to pre-inflate before blowing.
3. Blow into the valve until fully inflated.
4. Firmly close valve tab and push valve into the unit.



To use:

1. Press Power Button (⏻) to turn unit on.

- Press 1X = Bright mode
- Press 2X = Super Bright
- Press 3X = 1 sec flashing
- Press 4X = red/white S.O.S
- Press 5X = Off

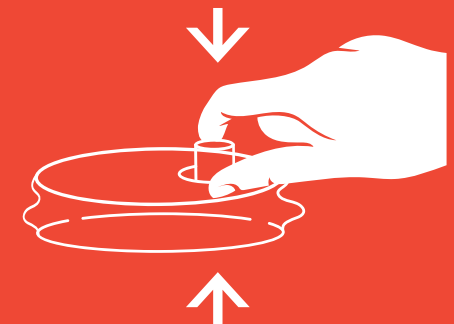
TIP:
Luci works inflated or deflated.



To deflate:

1. Open tab, squeeze valve and push to release the air from the unit.
2. Close tab on valve.

TIP:
Gently twist the light as you deflate for a flatter, more compact shape.



Luci® Troubleshooting

NEED
HELP?

CONTACT US: SUPPORT@MPOWERD.COM

What's the best way to charge my Luci?

Make sure your Luci is placed in direct sunlight with the solar panel face up, either in your windowsill or, even better, outside! We suggest you deflate your light before charging to help maintain its sleek shape.

Does it need to be sunny to charge my light?

No, but it will charge a lot more quickly on a bright, clear day. Your Luci charges via the sun's ultraviolet rays, so charging times will vary based on the UV index and other weather conditions like overcast skies. We recommend checking the daily forecast to make sure. If the UV Index is high (8 – 10 on the scale), expect a full charge in 6 – 8 hours. If it's very low (1 – 2 on the scale), your Luci will need up to 20 hours to charge all the way.

How many hours of light should I expect?

If you have your Luci set to super bright or flashing, you'll get 6 – 8 hours of light. If it's set to the first setting (bright), you should expect it to last between 8 and 12 hours long.

Do I need to activate the solar charger?

Nope, charging occurs as soon as you place the solar panels in the sun. Check the battery indicator button (it looks like a lightning bolt) to see how much longer you have until it's full (all three lights will be steady).

Will Luci charge with indoor lighting?

Luci charges via UV rays. Very hot objects like sun generate significant UV at all wavelengths. Your ordinary indoor fluorescent or incandescent lights aren't quite as hot as the sun, so they emit a tiny fraction of that UV. We recommend you go straight to the source and put your Luci directly in the sunlight from a windowsill or, for the best results, outside! Luci is durable and completely waterproof.

Will the battery be damaged if left in the sun after charging?

No, Luci can withstand temps up to 140°F. However, since heat causes objects to expand, we strongly suggest you keep your Luci deflated while charging to prevent the unit from distorting.

I can't inflate my Luci!

Firmly pinch the 2-way valve as you blow into the nozzle.

How do I get to the color cycle mode on Luci Color?

Cycle mode is the 9th setting. Press the power button past all 8 solid colors until the light turns red again, and then wait – you've reached it!

Where do I recycle my Luci?

You can drop your light off at any local recycling center that takes PVC products.

I'm still having trouble charging, inflating or turning on my light!

We're here for you. Contact us at cs@mpowerd.com and we'll be happy to help solve your problem.

DOs

• Take your Luci for a swim.

Every Luci light is completely waterproof, submersible and floats, so you can swim with it in the pool or lake, kayak and paddle board with it, take it in the bathtub, and even to the beach!

• Charge your Luci when you aren't using it.

That way, you'll ensure it's always ready to go. The battery is protected from overheating and overcharging. Just make sure your light is deflated first - this will help your light maintain its shape.

• Bring your Luci when you travel.

And not just for camping or concerts! Because it's super lightweight and compact you can take it with you anywhere.

• Share the love!

A lot of people give them as gifts to friends and family – especially for the outdoor enthusiasts, trendy homemakers, college students and world travelers in your life.

DON'Ts

• Sit on it.

• Chew on it. We're looking at you, Rex!

• Charge it while inflated.

On a hot, clear day, the sun could distort the shape of the light.

• Dispose of it in your home recycling bin.

With the solar panel and battery, you'll need to find an e-recycling center.

• Take it apart.

All the hardware and software is housed together in the bottom of your Luci, any adjustments could cause the light to stop working.

• Leave it in extreme heat, like on your black car dashboard

Luci can withstand temps up to 122°F (50°C), but on a hot summer day your car can get much hotter than that (up to 160°F)